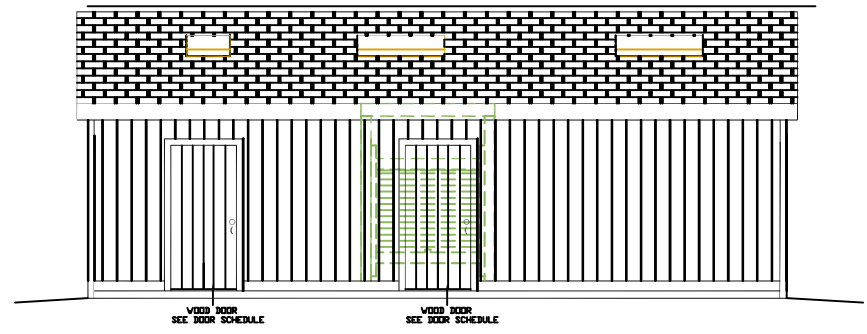
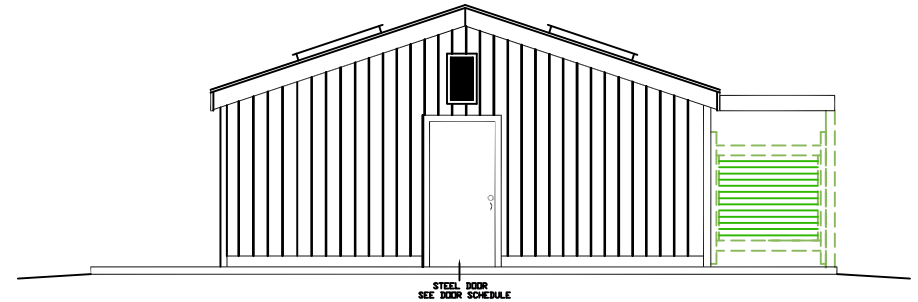
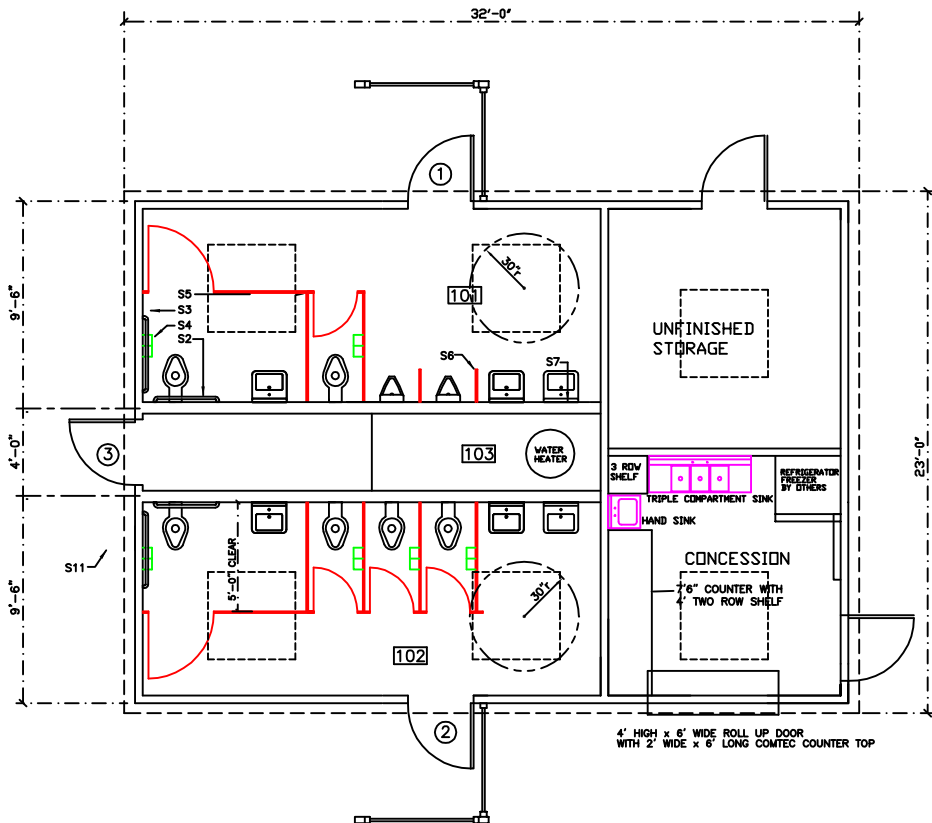


**FRONT ELEVATION**

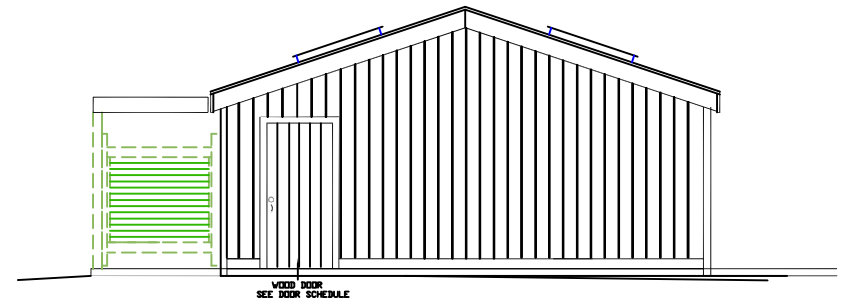


**REAR ELEVATION**

**NOTE:**  
 LANDINGS, WALKWAYS AND RAMPS ARE TO BE SUPPLIED AND  
 INSTALLED BY OTHERS AS REQUIRED TO MEET LOCAL HANDICAP  
 ACCESSIBILITY REQUIREMENTS.



**END ELEVATION @ CHASE DOOR**



**END ELEVATION**

MODEL: DW86-2432-CON-STO-FL

DATE: 10/20/99 (TMK)

