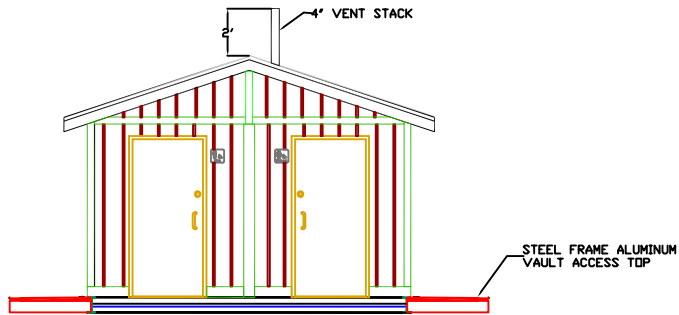
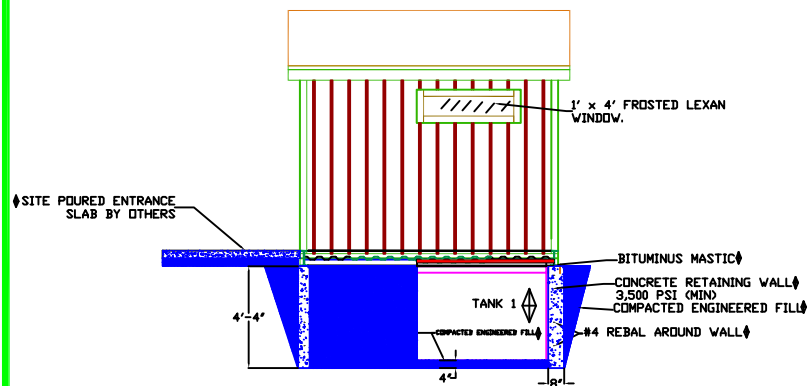


FLOOR PLAN



FRONT ELEVATION

NOTE: BUILDING SHOWN WITH 8" O.C. GROOVE PANEL SIDING.

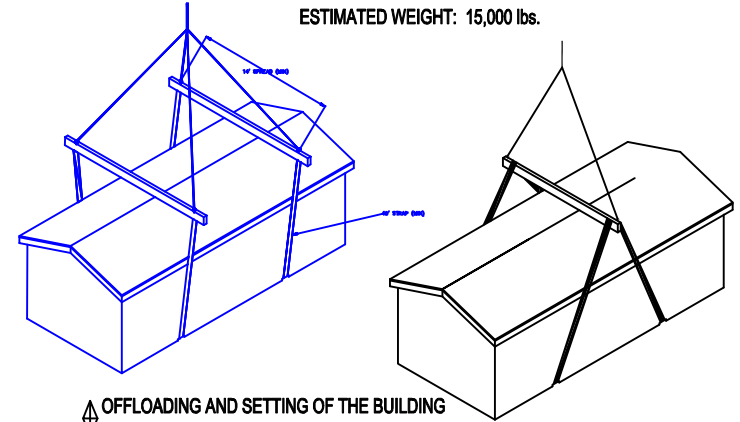


RIGHT ELEVATION

NOTE: LANDINGS, WALKWAYS AND RAMPS ARE TO BE SUPPLIED AND INSTALLED BY OTHERS AS REQUIRED TO MEET LOCAL HANDICAP ACCESSIBILITY REQUIREMENTS.

HANDLING SINGLEWIDE

ESTIMATED WEIGHT: 15,000 lbs.

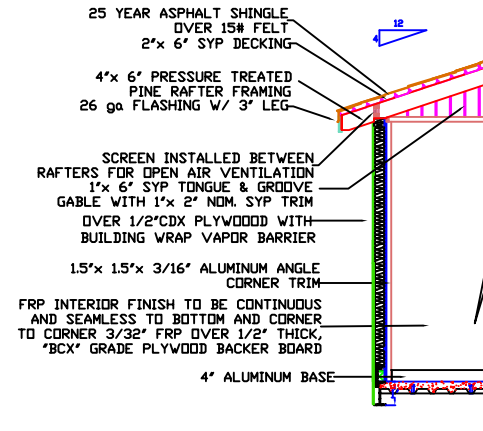


OFFLOADING AND SETTING OF THE BUILDING BY OWNER

The crane for handling the rest room once it has been delivered will be the responsibility of the OWNER/CONTRACTOR. A spreader bar assembly or cage will be required. The dimensions for the lifting points are outlined on the shop drawings. These should be reviewed with the crane company for clarification as to the requirements of the cage or spreader bar assembly.

ANCHORING OF THE RESTROOM

Install expansion bolts in the foundation @ 4' O.C. as outlined on the construction drawings.



BUILDING WALL SECTION

◇ SYMBOL: SUPPLIED BY MANUFACTURER AND INSTALLED BY OTHERS.

◆ SYMBOL: SUPPLIED AND INSTALLED BY OTHERS.

NOTE: AMMENITIES SUPPLIED MAY BE RELOCATED TO ACCOMMODATE TRAFFIC OR USE PATTERN WITHOUT DEVIATING FROM ADA RULES BUILDING CODES AND MODULAR SHIPPING ABILITY.

MODEL: R20-1216-CLVS, 2 RISER VAULT RESTROOM BUILDING

